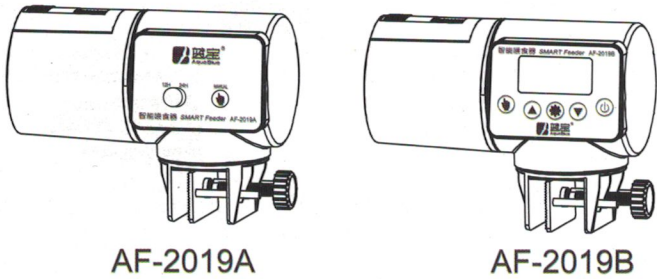




Operation instruction of smart feeder



AF-2019A

AF-2019B

Thank you for purchasing our intelligent feeder. Please read the manual carefully before using.

Product features:

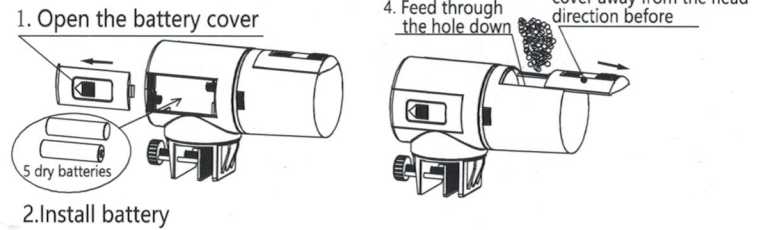
1. Super mute.
2. When the feed is not enough can add it from the top, is very convenient, Only push the top of the loading sliding cover to add.
3. Feeder drum volume is 200ml.
4. Multi-period, multi-turn feeding setting is optional, which can meet various demands.
5. This product is suitable for feeding with round grains and thin slices feed.
6. Convenient operation and beautiful appearance.
7. After the feeder is fixed, it can be rotated to the position you want.
8. Two section 5 dry batteries, The battery lasts three to six months.

Attention:

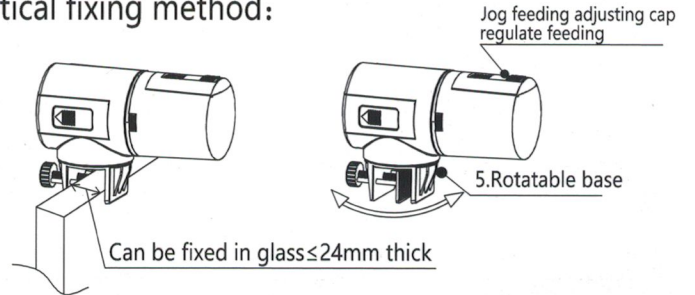
1. The feeder is a precision electronic product, which cannot be disassembled by non-professionals.
2. The feeder can't fall into the water.
3. When the battery runs out of power, please charge it in time.

Patented product

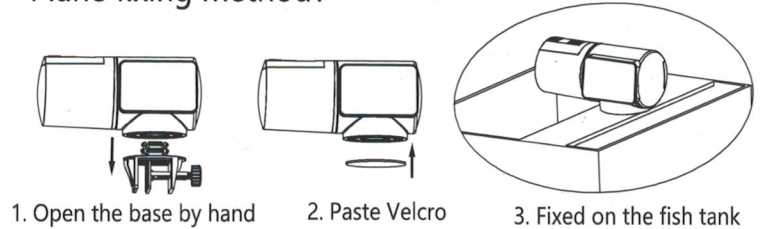
Operational approach:



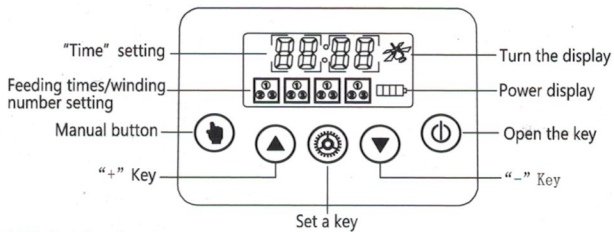
Vertical fixing method:



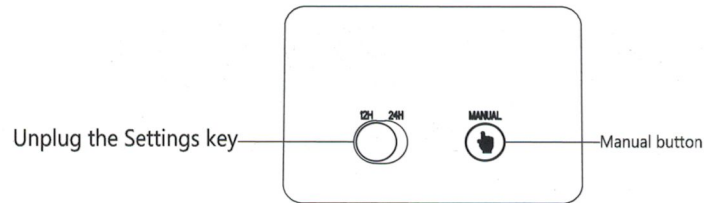
Plane fixing method:



AF-2019B



AF-2019A



AF-2019B Feeder Settings:

Switch on or off: press the power button for 3 seconds.

Setting of clock:

Press "set" button for 3 seconds, at which the hour number will flash, and press "+" or "-" button to adjust the hour.

Press the "set" button again, and the minute number starts flashing and press "+" or "-" button to adjust the minute.

When the time setting is completed, please press the "manual" key to save the current setting and exit.

If you need to make the following Settings, please press the "set" key again.

* Feeding time, feeding circle number setting:

Press "set" when the hour number flashes with the first box, press "+" or press "-" to adjust the hour when you need feeding, then press the "setting" button.

The minute number flashes with the first box, then click the "+" button or "-" button to adjust the minute you need feeding.

The minute number flashes with the first box, then click the "+" button or "-" button to adjust the number of turns you wanted.

1 is 1 cycle, 2 is 2 cycles, 3 is 3 cycles, empty is 0 cycle.

And so on, adjust the feeding time and feeding cycles of the second, third and fourth boxes,

When the setting is complete, press the "set" key to save and exit.

You can also adjust to any step, press the "manual" to save the current setting and exit.

* manual feeding: just press the "manual" button to achieve instant feeding.

Long press the "+" button for 5 seconds to set the feeding setting:

feed once at 8 am and once at 20 PM,

Long press the "-" button for 5 seconds to delete all settings.

AF-2019A Feeder Settings:

* Time setting: when the set button switch to 24H position means turn a cycle every 24hours. when the set button switch to 12H position means turn a cycle every 12hours.

* Manual feeding: just press the "manual" button to achieve instant feeding.

GUANGZHOU AQUABLU AQUARIUM TECHNOLOGY CO., LTD.

Add: No.110 Zone E, Bai Yi City Plaza, No. 25 Floor Expo Avenue, Liwan District, Guangzhou.

TEL: 020-31027103 FAX: 020-31027103 Mobile: 13302279320

QQ: 2304412498 E-mail: gzaquablue@163.com

http://www.aquablueg.com